

Asta Powerproject

WHAT'S NEW IN VERSION 12

Discover more at www.astadev.com



Asta Powerproject

WHAT'S NEW IN ASTA POWERPROJECT VERSION 12

Asta Powerproject is a comprehensive product suite with the flexibility to meet the varying needs of everyone involved in running projects and those who rely on project performance. It is widely relied upon to support project activity, at all levels of complexity.

Since its launch in 1988, Asta Powerproject has evolved and improved driven by regular feedback from users and by making use of the latest technologies available. This release of version 12 is a continuation of that evolution with a number of improvements which have been built and honed following continuous development and the integration of user feedback,

including wish-list votes for preferences from Regional User Group meetings.

Easy to use, scalable and powerful, Asta Powerproject Version 12 is designed specifically to handle any size of project with new features and fully supported flexible licensing.

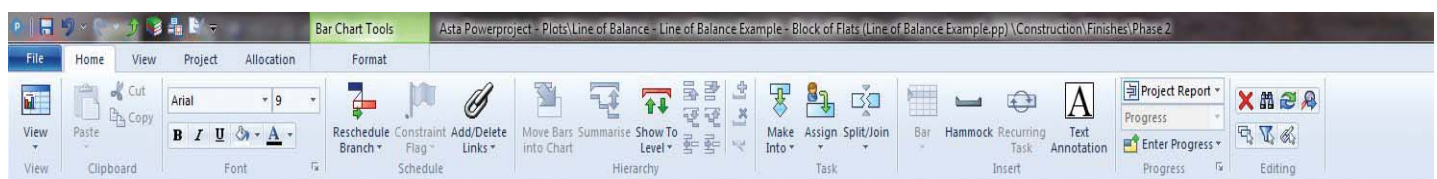
This document outlines the changes in the latest release. To watch a short video overview of these improvements and for more information on the full range of the Asta Powerproject suite visit www.astadev.com.

► Ribbon interface – easier access to commands

In Version 12 the Menu and Toolbars have been replaced with a more modern interface of a Ribbon.

The Ribbon interface is generally accepted to provide faster access to the commands that you need as you work with your projects. The commands are organised in logical groups, which are collected together under tabs. Each tab relates to a type of activity, such as displaying different items in a view or working with allocations.

The Ribbon's Home tab is illustrated below:



For Version 12 only, you can choose to go back to working with Asta Powerproject's 'Classic' menus and toolbars.

▶ Line of Balance functionality

Line of Balance is a technique to optimise the flow of resources through work locations.

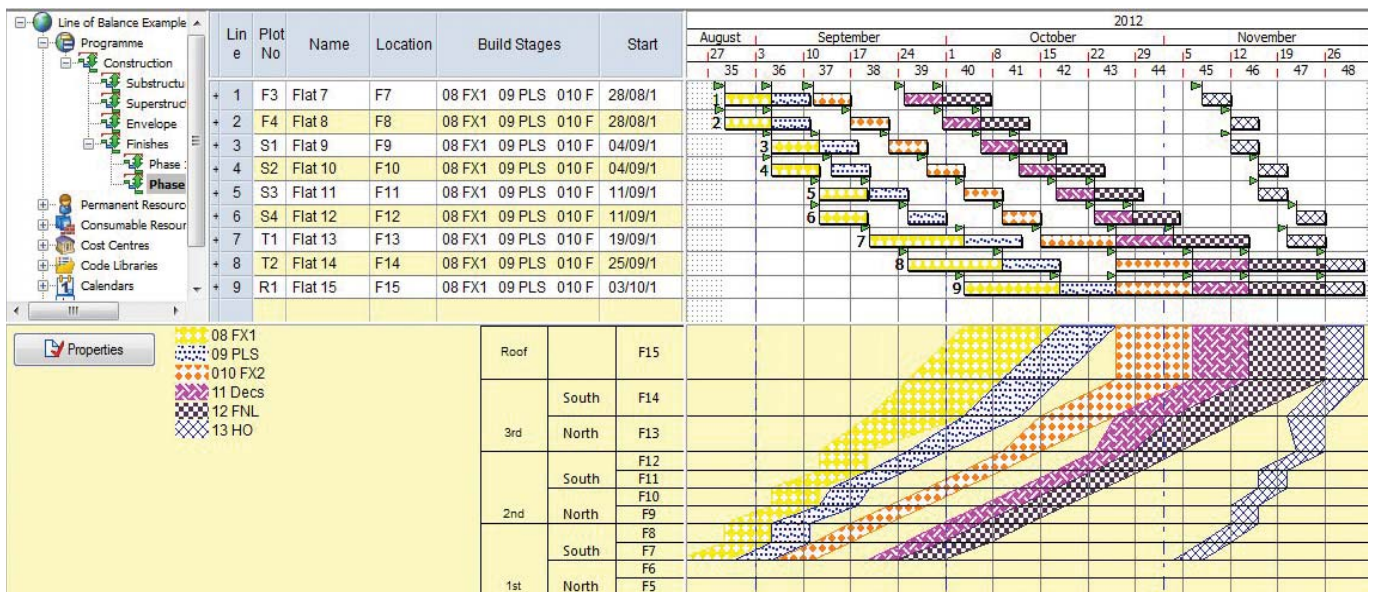
Each activity is assigned a Code Library entry for a 'Stage of work' (or Build Stage) and a Code Library entry for 'Location'.

A graph can then be displayed of the Stages of work by Location over time.

The graph can be inter-acted with to specify how many locations are worked on by one stage at a time and thus a large number of tasks can be edited very rapidly.

This technique is generally applied to repetitive processes – for example, with plasterers going from one room to another, could the project be done faster with 3-gangs rather than 2? i.e. work on 3 locations at the same time rather than 2. It has traditionally been applied in housing projects, but is just as valid to apply in the finishing stages of any type of project where work location can be specified.

Applying Line of Balance optimising of finishing stages within the context of a linked bar chart for other work gives the best possible modelling of the construction process.



▶ Set the duration of tasks via a Work amount and a Work-Rate

In Asta Powerproject there are many ways to set the duration of a task driven by the resources assigned – including their work-rate and the amount of work on the task.

In Version 12 this has been extended to the task-level so that the duration of an activity can be calculated from an amount of work to carry out and a work-rate. This doesn't have to be related to the resources of a task.

For example a concrete slab of 120 m² could be constructed at a rate of 8 m² per day – and the duration of 3-weeks would be calculated.

– Task work

Task work	120.00	m2	
Task work rate	8.00	Day	
Actual task work	0.00 m2		
Task work remaining	120.00 m2		

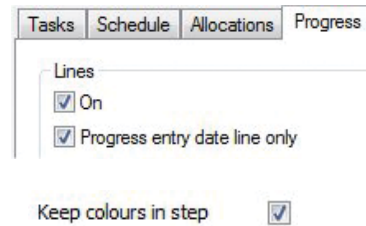
► Display the progress entry period's progress line in the bar chart automatically

In Version 12 there is a Format Barchart setting which allows you to only show the Progress Line of the selected Progress Entry Period.

So if you use Progress Periods as you change the active Period – only the Progress Line will be displayed on the bar chart.

Keep a Progress Periods' line and shading colour the same

When you set up a Progress Period you can change the line colour and shading colour independently. Most people want to keep the line and shading the same colour, so to save time the two can be set in one operation.



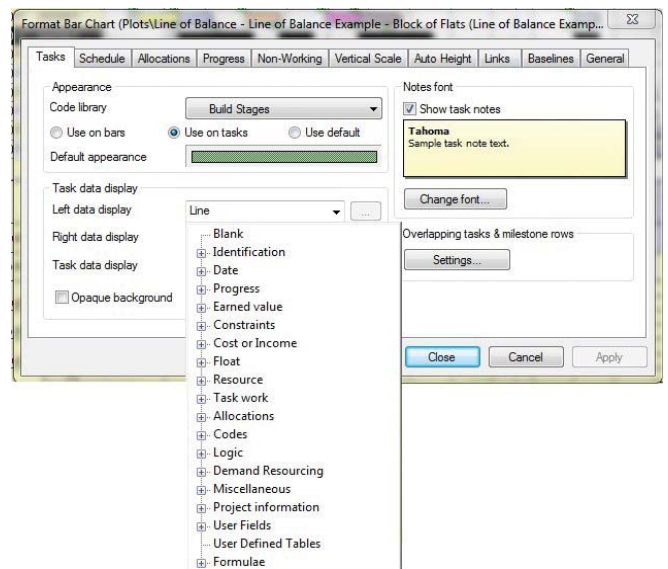
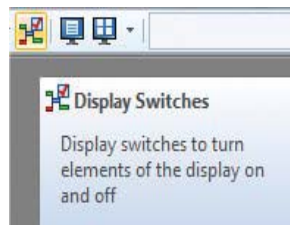
► Display any field on the bar chart

Version 12 has extended the data fields that can be displayed on each row of the bar chart via the **Format Bar Chart** dialog. The full range of data fields which can be placed in any column are now available on the **Task data display** group on the **Tasks** tab of this dialog.

Display switches now in Print Preview

Display switches to turn On/Off all the various aspects of the bar chart (criticality, float, links, etc.) are now available in the **Preview** window.

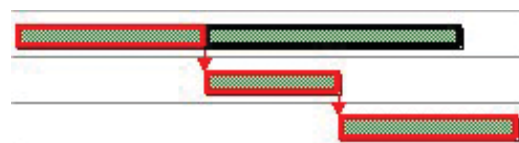
This is a time saving feature as if you had forgotten to switch off a feature you didn't want displayed on the printout previously you had to exit the Preview mode, make the changes on the bar chart and then re-enter Preview. You can now do all this without leaving the Preview screen.



► Choose to display part-critical tasks

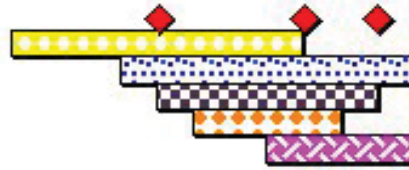
When a link starts part-way through an activity and leads to a chain of critical tasks it can be considered that only the part of the task before the link start position is critical.

In Version 12 there is a new **Format Barchart** switch to mark different portions of the same task with critical highlighting.



► Additional display options for overlapping tasks

Where overlapping tasks exist on the same row of the bar chart you can now choose to have them cascade downwards (previously only upwards) and to have any milestones clearly separated.

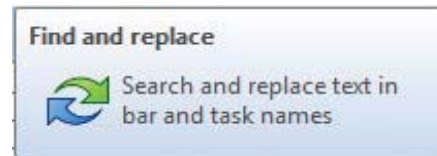


► Find & Replace for task Names and Notes

The previous **Find** function has been enhanced to include **Replace** and will search both task Names and Notes.

Spreadsheet Priority indicators now have images

You can now set the 'traffic light' Priority indicator to show a (preset) image rather than just a colour. This is to aid with monochrome printing and where people might be colour blind.

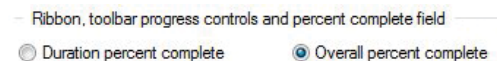


► Update child charts with information from parent charts

You can update the **Chart Properties** entries in child charts using the values of the current chart – using button on the **Chart Properties** dialog. You can also set that newly created child charts inherit the values on creation.

This saves you time in repeating the entry of key information held on this dialog to appear in the output. Choose the way in which certain controls mark progress.

You can now set whether the Progress % entry control of the; spreadsheet, Ribbon and Object Edit toolbar update using the Duration% method or the Overall% method. This is set in **File – Options (Tools – Options** as was).

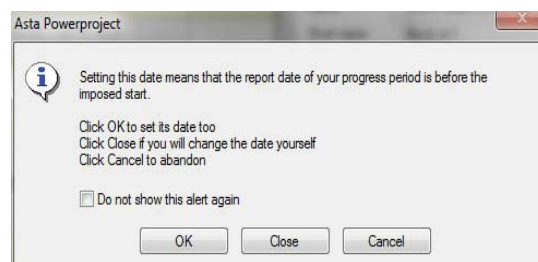


► A change to Project Start date can also update Progress

If you change the start date of a Project (**File – Advanced Properties (File – Properties** as was) to a date that is later than the report date of one or more existing Progress Periods, a warning now appears.

You have various options to affect the dates of the Progress Periods in relation to the new Project Start Date.

This greatly helps where Progress Periods have been established and there is a delay to the start of the project – it saves editing all the Progress Period dates.



► Display Link Notes in the spreadsheet Progress

You can now display Notes that have been entered against links in the spreadsheet, by displaying either the Predecessors or the Successors field in a column and configuring it to display link notes.

► Copy and paste Grid Lines between Views

You can now copy grid lines from one view onto the Windows clipboard and paste them into another view.

This is a time-saving feature if you want to apply the same grid lines to more than one view without having to set them up individually for each view.

► Create links that start at the beginning of Summary tasks

Before Version 12 it wasn't possible to start a logic link from the beginning of a Summary/Expanded task – now it is.

You could also end a link on the beginning of a Summary, but we have released the restriction on starting a link at this point.

A Start-to-Start link from a Summary/Expanded task would be saying “start the successor task at a given time after everything in the Summary task has started”. Some people find this a useful short-hand which saves creating more links from individual tasks within a Summary.

► Risk Analysis-related fields now available on dialogs

Previously the Risk Analysis minimum duration and maximum duration fields, were only available for editing via a spreadsheet column. They are now available on the **Task Properties** dialog, when the Risk Analysis module is activated alongside Asta Powerproject.

► Full support for foreign languages

In previous versions Powerproject had not been totally compliant with supporting extended characters sets for all languages. Version 12 is now **Unicode** compliant and supports all language characters.

Asta Development plc
Kingston House
Goodsons Mews
Wellington Street
Thame
Oxfordshire
OX9 3BX
United Kingdom

Tel: +44 (0)1844 261700
Fax: +44 (0)1844 261314
www.astadev.com
enquiry@astadev.com


An Eleco plc Company